



SOBY.COM
TRUSTED SINCE 1961



SØBY

HLSG

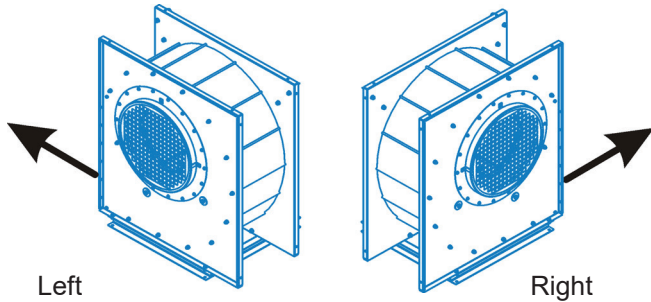
Centrifugal fans

SØBY HLSG centrifugal fan is one of the market's most efficient fans for drying and aerating grain and miscellaneous seed crops. The fan is available in many different versions, ranging from 3 kW up to 37 kW.



HLSG Centrifugal fan

SØBY HLSG fans are delivered as standard with air outlet as shown below, with air intake on either the right or left side.



Left

Right

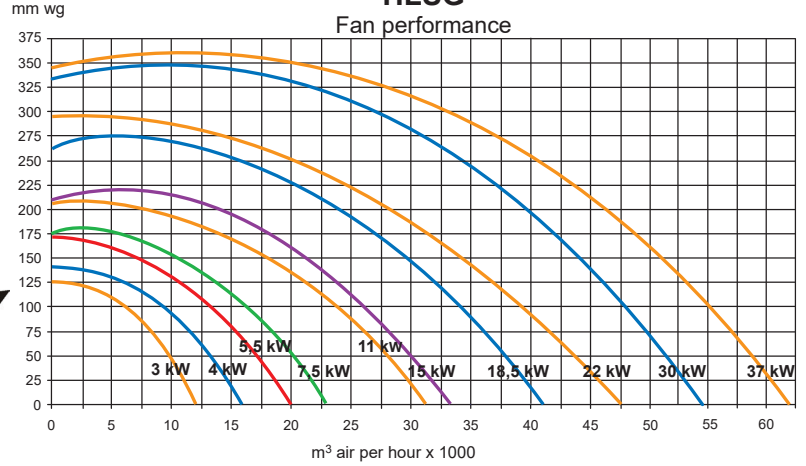
SØBY HLSG fans are available with the air outlet rotated up, down or with the air outlet located on top.

Square outlet pipe connection for embedment in wall. Round outlet pipe connection for insert or hose connection.

Transition to round silo

HLSG

Fan performance

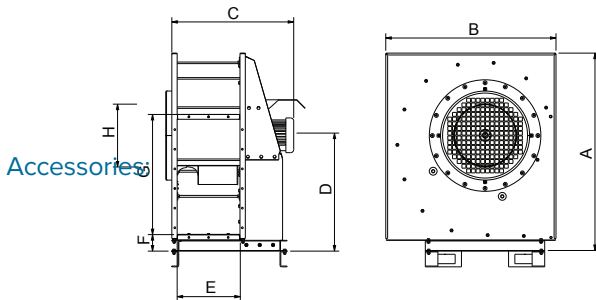


Configuration of blowers:

Suggested air volume per tonne grain:

200-300 m³/hour

NB: Seed crops require greater air volume, preferably more than twice the volume.



Accessories:

Type	kW	HP	A	B	C	D	E	F	G	H
HLSG	3,0	4,0	1255	1084	750	735	400	105	735	400
HLSG	4,0	5,5	1260	1084	790	735	400	105	735	400
HLSG	5,5	7,5	1445	1170	855	880	400	115	825	450
HLSG	7,5	10,0	1445	1170	715	880	460	115	825	450
HLSG	11,0	15,0	1550	1340	1040	940	500	115	915	500
HLSG	15,0	20,0	1550	1340	1080	940	540	115	915	500
HLSG	18,5	25,0	1790	1420	1260	1085	540	135	1065	580
HLSG	22,0	30,0	1790	1420	1260	1085	620	135	1065	580
HLSG	30,0	40,0	2000	1625	1340	1200	570	135	1065	650
HLSG	37,0	50,0	2000	1625	1410	1200	640	135	1065	650

SOBY TRUSTED SINCE 1961

Viborgvej 306 · DK-7840 Højslev
 (+45) 97 53 50 33 · soby@soby.com
 www.soby.com